

# MARRAN RUN STAGE 1 YOURLAND DEVELOPMENTS

## GENERAL NOTES:

### SURVEY

- ALL LEVELS ARE TO AUSTRALIAN HEIGHT DATUM AND ALL COORDINATES ARE TO MAP GRID OF AUSTRALIA (MGA) 94, ZONE 55.
- ALL EXISTING SURFACE LEVELS SHOWN ON THE ENGINEERING DRAWINGS HAVE BEEN INTERPOLATED FROM A DIGITAL TERRAIN MODEL. THESE LEVELS HAVE BEEN USED AS THE BASIS FOR ALL ENGINEERING DESIGN AND DETERMINATION OF QUANTITIES AND ARE ACCURATE TO WITHIN ±0.05m.
- ALL WORKS TO BE CARRIED OUT IN ACCORDANCE WITH AS2124-1992 GENERAL CONDITIONS OF CONTRACT, THE ROAD & DRAINAGE SPECIFICATION, APPROVED MUNICIPALITY SPECIFICATIONS AND STANDARD DRAWINGS AND TO THE SATISFACTION OF THE SUPERINTENDENT AND THE MUNICIPAL ENGINEER OR HIS REPRESENTATIVE.
- ROAD CHAINAGES REFER TO ROAD CENTRELINES. CHAINAGES FOR INTERSECTIONS AND CUL-DE-SACS REFER TO THE LIP OF KERB.

### EARTHWORKS

- THE LOCATION OF EXISTING SERVICES SHOULD BE DETERMINED BY THE CONTRACTOR PRIOR TO COMMENCING ANY EXCAVATION BY CONTACTING ALL LOCAL SERVICE AUTHORITIES. ANY EXISTING SERVICES SHOWN ON THESE DRAWINGS ARE OFFERED AS A GUIDE ONLY AND ARE NOT GUARANTEED AS CORRECT.
- WHERE REQUIRED ANY BUILDINGS, TRENCHES, FENCES AND OTHER STRUCTURES ON SITE ARE TO BE REMOVED AS DIRECTED BY THE ENGINEER. THE COST OF REMOVAL IS TO BE INCLUDED IN THE OVERALL EARTHWORKS FIGURE UNLESS A SPECIFIC ITEM FOR REMOVAL IS DENOTED IN THE SCHEDULE.
- ALL EXCAVATED ROCK AND SURPLUS SPOIL TO BE REMOVED AND DISPOSED OFF SITE UNLESS NOTED OTHERWISE.
- ALL FILLING ON LOTS AND WITHIN ROAD RESERVES GREATER THAN 200mm IS TO BE UNDERTAKEN USING LEVEL 1 SUPERVISION AND BE COMPLETED IN ACCORDANCE WITH AS 3798-2007. FILL AREAS ARE TO BE STRIPPED OF TOPSOIL, FILLED AND REPLACED WITH TOPSOIL (WHERE REQUIRED) TO OBTAIN THE FINAL LEVELS SHOWN ON THE DRAWINGS.
- FILLING MATERIAL IS TO BE IN ACCORDANCE WITH THE SPECIFICATION, AS 3798-2007 & TO THE SATISFACTION OF COUNCIL AND THE SUPERINTENDENT.
- ALL BATTERS SHALL BE 1 IN 6, UNLESS OTHERWISE SHOWN.
- NO FILL OR STOCKPILING OF MATERIAL IS TO BE PLACED ON ANY RESERVE FOR PUBLIC OPEN SPACE UNLESS OTHERWISE DIRECTED OR APPROVED BY THE SUPERINTENDENT.
- TBM'S TO BE RE-ESTABLISHED BY THE LICENSED SURVEYOR IF FOUND TO BE MISSING AT THE COMMENCEMENT OF CONSTRUCTION. THE CONTRACTOR WILL BE RESPONSIBLE FOR CARE AND MAINTENANCE OF T.B.M.'S THEREAFTER.
- AT LEAST 3 DAYS PRIOR TO COMMENCING WORK ON EXCAVATIONS IN EXCESS OF 150mm DEEP, A NOTIFICATION FORM MUST BE SENT TO WORKSAFE. THE CONTRACTOR IS TO COMPLY WITH WORKSAFE, THE MINES (TRENCHES) REGULATION 1982, THE MINES ACT 1958 AND OCCUPATIONAL HEALTH AND SAFETY ACT 1985, 2004.
- ALL SERVICE TRENCHES UNDER DRIVEWAYS, FOOTPATHS AND PARKING BAYS TO BE BACKFILLED WITH CLASS 2 CRUSHED ROCK. SERVICE TRENCHES LESS THAN 750mm BEHIND KERB AND CHANNEL OR PAVED TRAFFIC AREAS ARE ALSO TO BE BACKFILLED WITH COMPACTED CLASS 2 CRUSHED ROCK.
- WHERE REQUIRED, ALL EXISTING DAMS, DEPRESSIONS AND DRAINS ARE TO BE BREACHED, DRAINED, DESLUDGED AND SHALL BE EXCAVATED TO A CLEAN FIRM BASE. THE SURFACE SHALL BE INSPECTED, APPROVED AND LEVELED BY THE ENGINEER PRIOR TO COMMENCEMENT OF FILLING. THE FILL SHALL BE APPROVED SELECTED ON SITE MATERIAL OR APPROVED IMPORTED MATERIAL. THE FILL SHALL BE PLACED UNDER CONTROLLED MOISTURE CONDITIONS IN ACCORDANCE WITH THE SPECIFICATION.
- NO BLASTING TO BE CARRIED OUT WITHIN THE MUNICIPALITY WITHOUT OBTAINING COUNCILS PERMISSION.

### SERVICES

- GAS AND WATER CONDUITS ARE TO BE, Ø50mm . CLASS 12 P.V.C. - SINGLE SERVICE  
Ø100mm . CLASS 12 P.V.C. - DUAL SERVICE (DRINKING AND NON DRINKING WATER)  
WITH THE FOLLOWING MINIMUM COVER TO FINISHED SURFACE LEVELS:  
ROAD PAVEMENT - 0.80m  
VERGE, FOOTPATHS - 0.45m
- ALL SERVICE CONDUIT TRENCHES UNDER ROAD PAVEMENTS TO BE BACKFILLED IN ACCORDANCE WITH RELEVANT MUNICIPALITY OR ROAD AUTHORITY SPECIFICATION.
- WATER TAPPINGS TO BE LOCATED IN ACCORDANCE WITH MRWA-W-110 STANDARDS UNLESS OTHERWISE SHOW
- TELSTRA ARE TO BE NOTIFIED 7 DAYS PRIOR TO PLACEMENT OF CONCRETE WORKS.
- AG/SUBSOIL DRAIN TO BE LAID BEHIND KERB WHERE REQUIRED IN ACCORDANCE WITH THE COUNCIL STANDARD DRAWINGS AND CONNECTED TO UNDERGROUND DRAINAGE.
- ALL STORMWATER DRAINS ARE TO BE CLASS '2' R.C. PIPES UNLESS OTHERWISE SHOWN. ALL R.C. JOINTS ARE TO BE RUBBER RING JOINTED (R.R.J.).

### STORM WATER DRAINAGE

- CENTRELINES OF ALL EASEMENT DRAINS ARE OFFSET 1.0m OR 2.2m (WHERE OUTSIDE OF SEWER) FROM THE PROPERTY LINE UNLESS SHOWN OTHERWISE.
- WHERE CURVED PIPES ARE SHOWN ON THE FACE PLANS THEY ARE TO BE LAID PARALLEL TO THE BACK OF KERB, EXCEPT WHERE A RADIUS HAS BEEN SPECIFICALLY NOMINATED. CURVED PIPES ARE TO BE APPROVED BY COUNCIL AND IN ACCORDANCE WITH THE MANUFACTURERS SPECIFICATIONS.
- HOUSE DRAINS NOT OUT OF PIT TO BE OFFSET IN ACCORDANCE WITH COUNCIL STANDARDS UNLESS NOTED OTHERWISE.
- ALL HOUSE DRAINS AND PROPERTY INLETS ARE TO BE CONSTRUCTED IN ACCORDANCE WITH COUNCIL STANDARDS EDM 701 TO EDM 704.

### PAVEMENT

- PAVEMENT DEPTHS MAY BE MODIFIED AS DIRECTED BY THE SUPERINTENDENT. PAVEMENT TO BE BOXED OUT TO MINIMUM DEPTH DENOTED, INSPECTED AND IF SUBGRADE IS IN QUESTION, FURTHER TESTING CARRIED OUT TO DETERMINE FINAL PAVEMENT DEPTH.
- WHERE PAVEMENT IS CONSTRUCTED ON FILLING, FILL MATERIAL IS TO BE APPROVED BY THE SUPERINTENDENT AND COUNCIL. FILLING TO BE CONSTRUCTED IN LAYERS 150mm THICK WITH COMPACTION ACHIEVING 95% AUSTRALIAN STANDARD DENSITY.
- WHEN PAVEMENT EXCAVATION IS IN ROCK ALL LOOSE MATERIAL INCLUDING ROCKS AND CLAY) MUST BE REMOVED. THE SUB-GRADE MUST THEN BE REGULATED WITH COUNCIL APPROVED MATERIAL.

- ALL FOOTPATHS AND PEDESTRIAN CROSSING KERB RAMPS TO BE CONSTRUCTED IN ACCORDANCE WITH STANDARD DRAWINGS EDM 4 01 & 4 03.
- ALL RESIDENTIAL VEHICLE CROSSINGS TO BE CONSTRUCTED IN ACCORDANCE WITH STANDARD DRAWINGS EDM 501 & 502. ALL INDUSTRIAL VEHICLE CROSSINGS TO BE CONSTRUCTED IN ACCORDANCE WITH STANDARD DRAWING EDM 503.

### SIGNAGE AND LINEMARKING

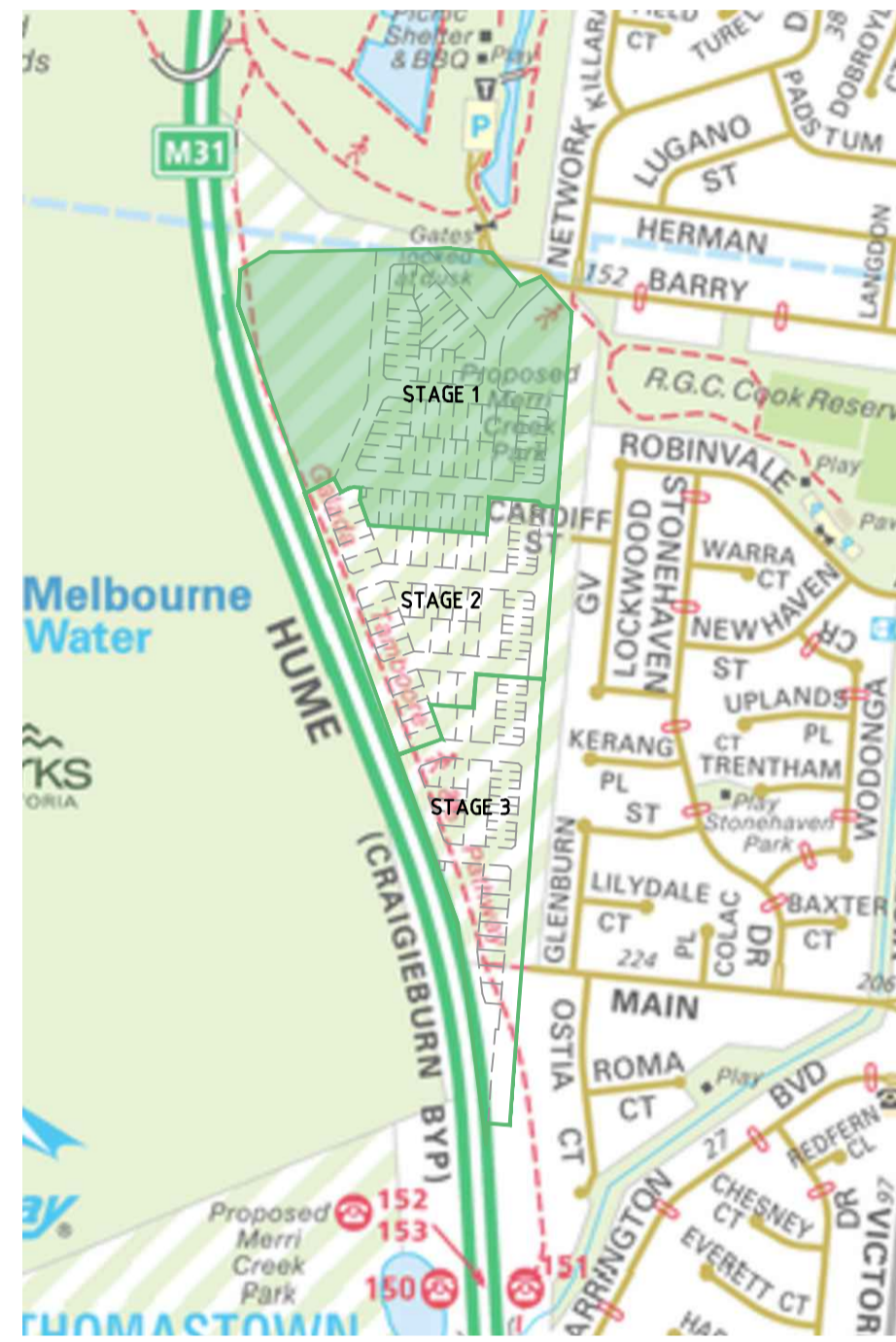
- LINEMARKING AND SIGNAGE TO BE INSTALLED IN ACCORDANCE WITH AS 1742 SERIES UNLESS NOTED OTHERWISE. STREET SIGNS ARE TO BE INSTALLED IN ACCORDANCE WITH COUNCIL STANDARD DRAWING SD 825.
- ALL TEMPORARY WARNING SIGNS USED DURING CONSTRUCTION SHALL BE SUPPLIED AND MAINTAINED IN ACCORDANCE WITH AS 1742-3.
- TACTILE GROUND SURFACE INDICATORS ARE TO BE INSTALLED IN ACCORDANCE WITH THE DISABILITY DISCRIMINATION ACT AND RELEVANT COUNCIL STANDARD DRAWINGS.

### ENVIRONMENTAL

- CONTRACTOR TO PROVIDE AN ENVIRONMENTAL MANAGEMENT PLAN INCLUDING SILT AND SEDIMENT RUNOFF PROTECTION ETC. PRIOR TO THE COMMENCEMENT OF WORKS.
- ALL TREES AND SHRUBS ARE TO BE RETAINED UNLESS OTHERWISE SHOWN. IF ROAD AND DRAINAGE CONSTRUCTION NECESSITATES THEIR REMOVAL, WRITTEN PERMISSION MUST BE OBTAINED FROM THE SUPERINTENDENT.
- TREES NOT SPECIFIED FOR REMOVAL ARE TO BE PROTECTED WITH APPROPRIATE EXCLUSION FENCING PRIOR TO COMMENCEMENT OF ANY WORKS.
- THE CONTRACTOR IS REQUIRED TO OBTAIN A 'PERMIT TO WORK' FROM MELBOURNE WATER'S SURVEILLANCE OFFICER AT THE PRE-COMMENCEMENT MEETING. THE CONTRACTOR IS REQUIRED TO ENSURE THAT THE 'PERMIT TO WORK' IS KEPT UP TO DATE FOR THE DURATION OF THE CONTRACT.

## DRAWING SCHEDULE

DRAWING	DESCRIPTION	SHEET No.	REVISION
CR100	GENERAL NOTES	1	6
CR200	ROAD LAYOUT PLANS - SHEET 1	2	2
CR201	ROAD LAYOUT PLANS - SHEET 2	3	1
CR202	ROAD LAYOUT PLANS - SHEET 1	4	2
CR203	ROAD LAYOUT PLANS - SHEET 2	5	2
CR204	ROAD LAYOUT PLANS - SHEET 3	6	2
CR300	ROAD LONG SECTIONS - SHEET 1	7	0
CR301	ROAD LONG SECTIONS - SHEET 2	8	0
CR400	ROAD CROSS SECTIONS - SHEET 1	9	0
CR401	ROAD CROSS SECTIONS - SHEET 2	10	0
CR402	ROAD CROSS SECTIONS - SHEET 3	11	0
CR403	ROAD CROSS SECTIONS - SHEET 4	12	0
CR404	ROAD CROSS SECTIONS - SHEET 5	13	1
CR405	ROAD CROSS SECTIONS - SHEET 6	14	0
CR500	INTERSECTION DETAILS - SHEET 1	15	0
CR501	INTERSECTION DETAILS - SHEET 2	16	1



LOCALITY PLAN

NOT TO SCALE



### WARNING

BEWARE OF UNDERGROUND/OVERHEAD SERVICES  
THE LOCATION OF SERVICES ARE APPROXIMATE ONLY AND THEIR EXACT POSITION SHOULD BE PROVEN ON SITE. NO GUARANTEE IS GIVEN THAT ALL EXISTING SERVICES ARE SHOWN. SPECIAL CONSIDERATION SHOULD BE GIVEN TO CONSTRUCTION PROCEDURES UNDER OVERHEAD ELECTRICITY TRANSMISSION LINES.

## LEGEND

### DESCRIPTION

DESCRIPTION	EXISTING	PROPOSED
WATER MAIN, VALVE AND HYDRANT		
UNDERGROUND ELECTRICITY		
OVERHEAD ELECTRICITY & POLE		
TELECOMMUNICATIONS & SERVICE PIT		
OPTIC FIBRE		
GAS MAIN		
SEWER & MAINTENANCE STRUCTURE		
CENTRAL INVERT		
COUNCIL STORMWATER DRAIN AND PIT		
STORM WATER DRAINAGE PROPERTY INLETS		
COUNCIL STORM WATER PITS		
HOUSE DRAIN		
AG DRAIN AND FLUSHER		
STORM WATER DRAINAGE PIT NUMBER		
GAS & WATER CONDUITS		
CONCRETE VEHICLE CROSSING		
NON-STANDARD CONCRETE VEHICLE CROSSING REFER CR700		
RIDGE / CHANGE OF GRADE LINE		
SURFACE CONTOUR MINOR		
SURFACE CONTOUR MAJOR		
SURFACE LEVEL		
BATTER LEVEL (TOP / TOE)		
EARTHWORKS GRADE		
SIGN AND POST		
STREET SIGN		
PERMANENT SURVEY MARK		
BOLLARD		
ROAD CHAINAGES		
LOT CHAINAGES		
SETOUT POINT		
LIMIT OF WORKS		
BATTER		
EXCAVATION GREATER THAN 0.20m		
FILLING GREATER THAN 0.20m		
BOUNDARY BATTER		
FENCE - VEHICLE EXCLUSION		
FENCES		
TREE TO BE REMOVED		
FOOTPATH		
SHARED PATH		
PAVEMENT		
TACTILE GROUND SURFACE INDICATOR		
NATIVE VEGETATION TO BE RETAINED		
NATIVE VEGETATION TO BE REMOVED		
STREET TREES		
FALL OF LOT		
FALL ARROW		

CR502	INTERSECTION DETAILS - SHEET 3	17	0
CR503	INTERSECTION DETAILS - SHEET 4	18	2
CR504	INTERSECTION DETAILS - SHEET 5	19	1
CR600	DRAINAGE LONG SECTIONS - SHEET 1	20	1
CR601	DRAINAGE LONG SECTIONS - SHEET 2	21	2
CR602	DRAINAGE LONG SECTIONS - SHEET 3	22	3
CR603	DRAINAGE LONG SECTIONS - SHEET 4	23	2
CR604	DRAINAGE LONG SECTIONS - SHEET 5	24	1
CR605	DRAINAGE LONG SECTIONS - SHEET 6	25	0
CR606	DRAINAGE LONG SECTIONS - SHEET 7	26	0
CR607	DRAINAGE LONG SECTIONS - SHEET 8	27	0
CR608	DRAINAGE PIT SCHEDULE & SETOUT DETAILS	28	4
CR609	WEIR PIT DETAIL	29	1
CR700	PAVEMENT AND TYPICAL DETAILS	30	3
CR701	DRAINAGE OUTFALL DETAIL	31	0
CR702	FOOTPATH SETOUT AND RESERVE DETAILS	32	5
CR800	SIGNAGE AND LINEMARKING - SHEET 1	33	2
CR801	SIGNAGE AND LINEMARKING - SHEET 2	34	1

6	DRAINAGE SCHEDULE AMENDED	P.C	28/07/23	Scale
5	DRAWING SCHEDULE AMENDED	P.C	10/07/23	
4	DRAWING SCHEDULE AMENDED	P.C	14/06/23	
3	DRAWING SCHEDULE AMENDED	P.C	18/05/23	
2	DRAWING SCHEDULE AMENDED	P.C	03/05/23	
1	DRAWING SCHEDULE AMENDED	P.C	20/04/23	
0	ISSUED FOR CONSTRUCTION	P.C	21/02/23	
H	DRAWING SCHEDULE AMENDED	P.C	21/02/23	
Rev	Amendments	Approved	Date	



© Spiire Australia Pty Ltd All Rights Reserved  
This document is produced by Spiire Australia Pty Ltd solely for the benefit of and use by the client in accordance with the terms of the retainer. Spiire Australia Pty Ltd does not and shall not assume any responsibility or liability whatsoever to any third party arising out of any use or reliance by third party on the content of this document.

**spiire**

L6 414 LA TROBE STREET PO BOX 16084 MELBOURNE  
VICTORIA 8007 AUSTRALIA T 61 3 9993 7888  
spiire.com.au ABN 55 050 029 635

**YourLand**  
Developments

Designed  
H.KURMUS  
Authorised  
P.CURNOW (PE0004069)

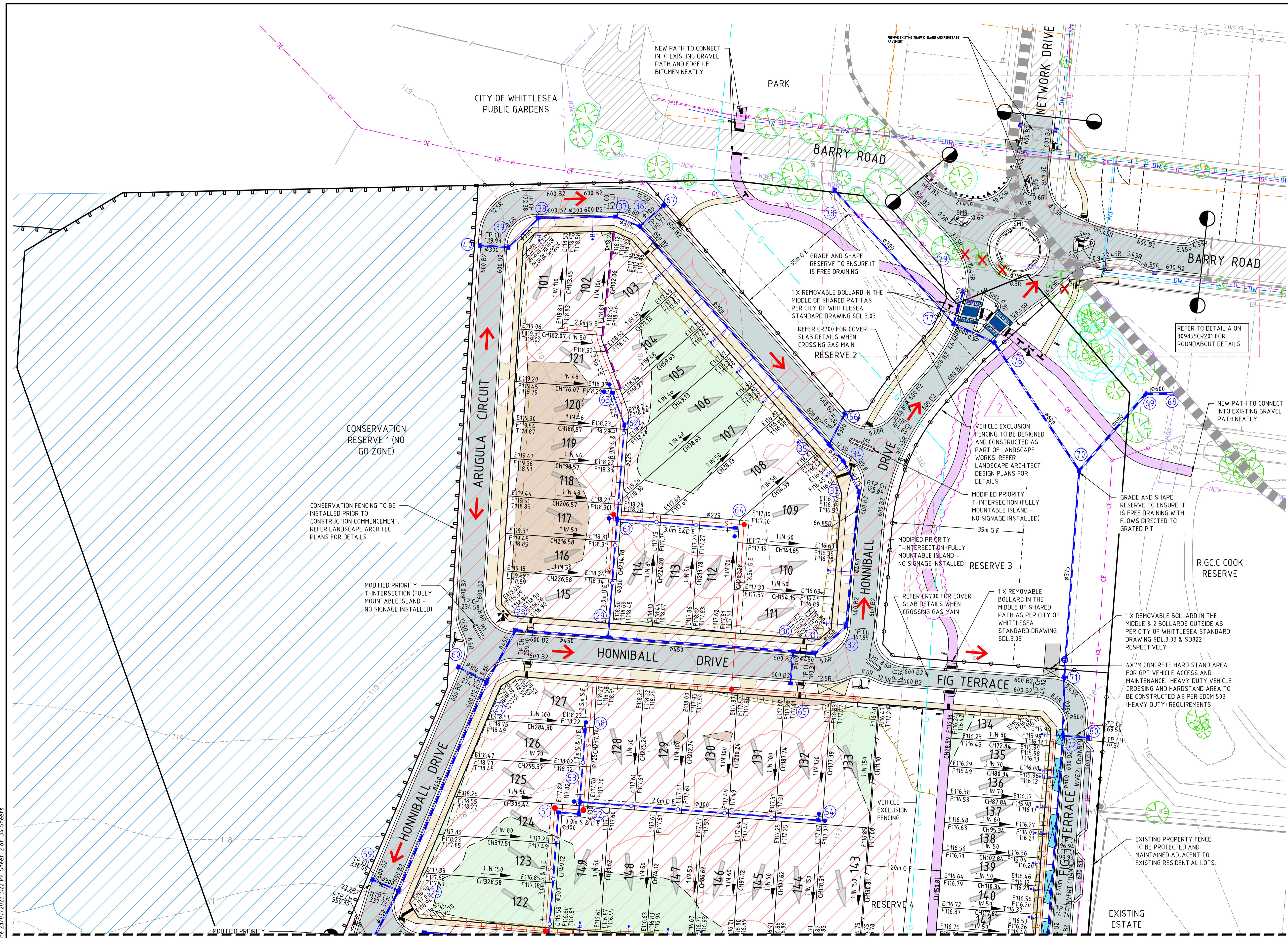
Checked  
J.POYNOR  
Date  
08/07/22

**MARRAN RUN  
STAGE 1  
ROAD AND DRAINAGE  
GENERAL NOTES**  
CITY OF WHITTLESEA  
YOURLAND DEVELOPMENTS

**CONSTRUCTION** Drg No **309855CR100** Rev **6**



- NOTE:**
1. ALL TGSIS ARE TO BE INSTALLED AS PER CITY OF WHITTLESEA STANDARD DRAWING SD320
  2. FOOTPATH PRAM CROSSING SPLAYS ARE TO BE NO WIDER THAN 600mm.
  3. VEHICLE CROSSINGS SHALL BE MIN. 750mm FROM DRAINAGE PITS UNLESS OTHERWISE NOTED.
  4. ALL VEHICLE EXCLUSION FENCING TO BE DESIGNED AND CONSTRUCTED AS PART OF LANDSCAPE WORKS.



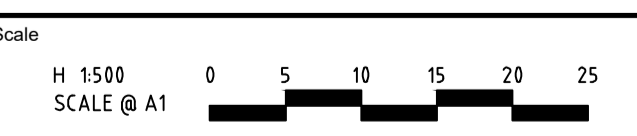
FOR CONTINUATION REFER TO 309855CR201



**WARNING**  
BEWARE OF UNDERGROUND/OVERHEAD SERVICES  
THE LOCATION OF SERVICES ARE APPROXIMATE ONLY, AND THEIR EXACT POSITION SHOULD BE PROVEN ON SITE. NO GUARANTEE IS GIVEN THAT ALL EXISTING SERVICES ARE SHOWN. SPECIAL CONSIDERATION SHOULD BE GIVEN TO CONSTRUCTION PROCEDURES UNDER OVERHEAD ELECTRICITY TRANSMISSION LINES.

file name: 309855CR200.dwg, layout: 1, title: 1, created: 28/07/2023 2:27 PM, sheet: 2 of 34, sheets

Rev	Amendments	Approved	Date
2	FOOTPATH AMENDED	P.C.	14/06/23
1	PARKING BAY & LEVELS AMENDED	P.C.	26/04/23
0	ISSUED FOR CONSTRUCTION	P.C.	21/02/23
H	FOOTPATH AMENDED	P.C.	21/02/23
G	PATH MOVED TO 1.5M OFFSET	P.C.	22/12/22
F	SIGNAGE, NOTES, FOOTPATH, HOUSE DRAIN & DRAINAGE AMENDED	P.C.	26/10/22
E	DRIVEWAYS & HOUSE DRAIN CONNECTIONS AMENDED	P.C.	06/10/22
D	NOTES, ROUNDABOUT, PATH, DRAINAGE, EASEMENTS, FENCE & SERVICES AMENDED	P.C.	28/09/22



© Spiire Australia Pty Ltd All Rights Reserved  
This document is produced by Spiire Australia Pty Ltd solely for the benefit of and use by the client in accordance with the terms of the retainer. Spiire Australia Pty Ltd does not and shall not assume any responsibility or liability whatsoever to any third party arising out of any use or reliance by third party on the content of this document.



L6 414 LA TROBE STREET PO BOX 16084 MELBOURNE  
VICTORIA 3007 AUSTRALIA T 61 3 9993 7888  
spiire.com.au ABN 55 050 029 635

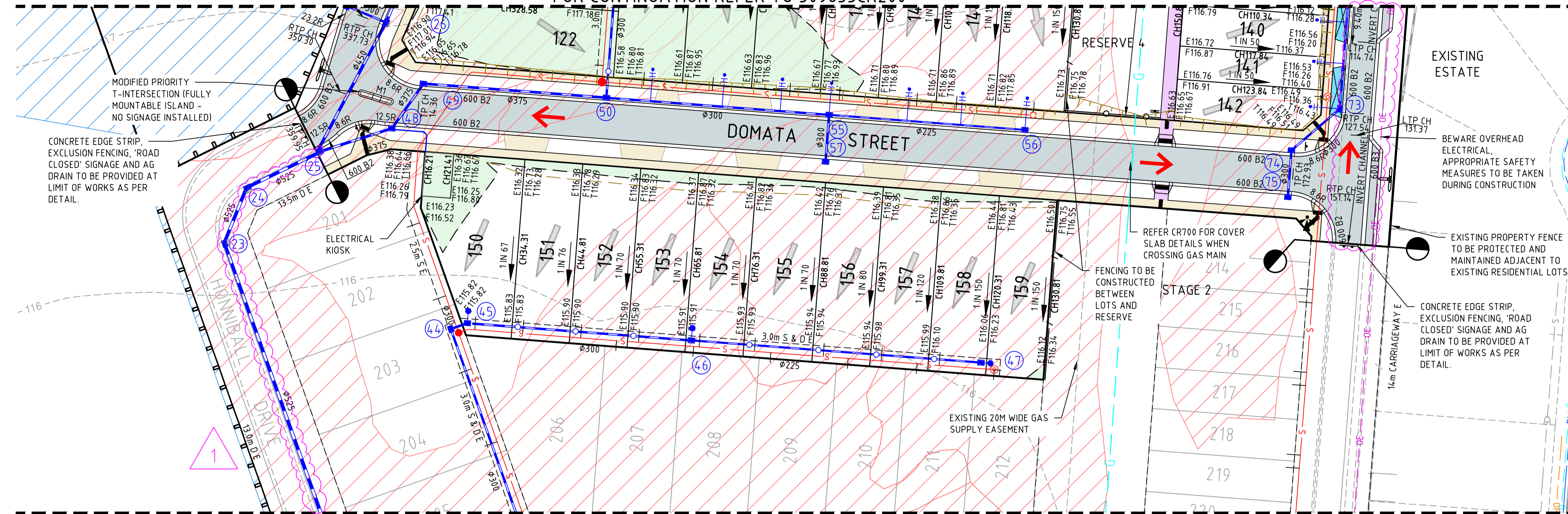


Designed  
**H.KURMUS**  
Checked  
**J.POYNOR**  
Authorised  
**P.CURNOW (PE0004069)**  
Date  
**08/07/22**

**MARRAN RUN  
STAGE 1  
ROAD AND DRAINAGE  
FACE PLAN - SHEET 1  
CITY OF WHITTLESEA  
YOURLAND DEVELOPMENTS**

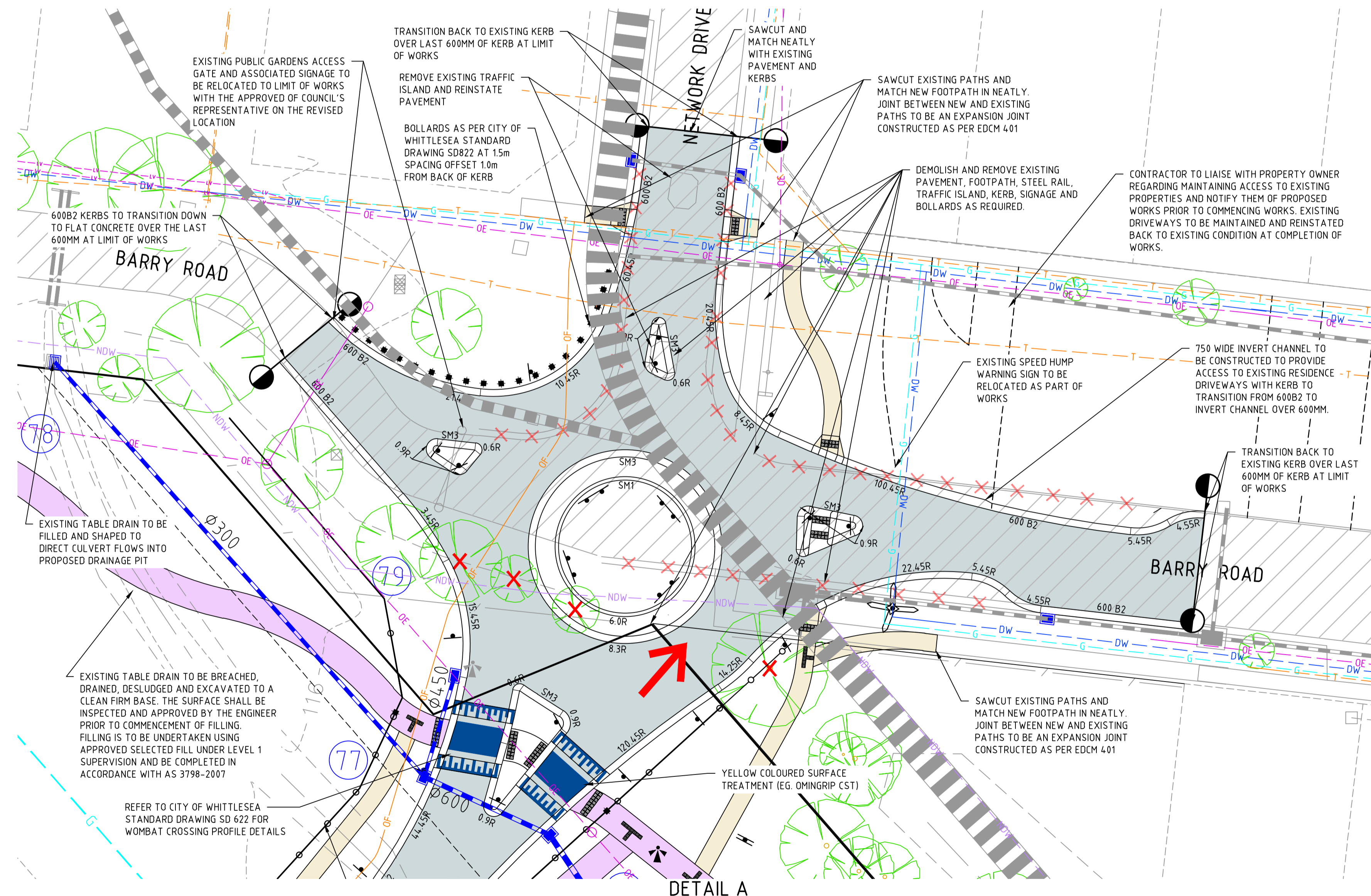
**CONSTRUCTION** Dwg No **309855CR200** Rev **2**

FOR CONTINUATION REFER TO 309855CR200



- NOTE:**
1. ALL TGS ARE TO BE INSTALLED AS PER CITY OF WHITTLESEA STANDARD DRAWING SD320
  2. FOOTPATH PRAM CROSSING SPLAYS ARE TO BE NO WIDER THAN 600mm.
  3. VEHICLE CROSSINGS SHALL BE MIN. 750mm FROM DRAINAGE PITS UNLESS OTHERWISE NOTED.
  4. ALL VEHICLE EXCLUSION FENCING TO BE DESIGNED AND CONSTRUCTED AS PART OF LANDSCAPE WORKS.

FOR CONTINUATION REFER TO 309855CR202



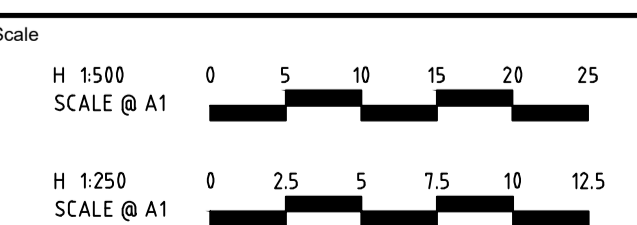
**NOTE**  
PRIOR TO ANY WORKS COMMENCING ON ROUNDABOUT CONTRACTOR MUST SERVICE PROVE ALL EXISTING SERVICE MAINS AND AUTHORITY ASSETS WITH VICINITY OF THE WORKS. SUPERINTENDENT TO BE NOTIFIED OF ANY CONFLICTING SERVICING ISSUES.



**WARNING**  
BEWARE OF UNDERGROUND/OVERHEAD SERVICES  
THE LOCATION OF SERVICES ARE APPROXIMATE ONLY AND THEIR EXACT POSITION SHOULD BE PROVEN ON-SITE. NO GUARANTEE IS GIVEN THAT ALL EXISTING SERVICES ARE SHOWN. SPECIAL CONSIDERATION SHOULD BE GIVEN TO CONSTRUCTION PROCEDURES UNDER OVERHEAD ELECTRICITY TRANSMISSION LINES.

file name: 309855CR200.dwg, layout: name: CR201, created by: Helen Kurmus, date: 28/07/2023 3:27 PM, sheet: 3 of 34, sheets

1	PARKING BAY & DRAINAGE AMENDED	P.C	20/04/23
0	ISSUED FOR CONSTRUCTION	P.C	21/02/23
H	FOOTPATH AMENDED	P.C	21/02/23
G	PATH MOVED TO 1.5M OFFSET	P.C.	22/12/22
F	SIGNAGE, NOTES, FOOTPATH, HOUSE DRAIN & DRAINAGE AMENDED	P.C	26/10/22
E	DRIVEWAYS & HOUSE DRAIN CONNECTIONS AMENDED	P.C	06/10/22
D	NOTES, ROUNDABOUT, PATH, DRAINAGE, EASEMENTS, FENCE & SERVICES AMENDED	P.C	28/09/22
C	REVISED DRAINAGE AND NOTES ADDED	P.C	06/09/22
Rev	Amendments	Approved	Date



© Spiire Australia Pty Ltd All Rights Reserved  
This document is produced by Spiire Australia Pty Ltd solely for the benefit of and use by the client in accordance with the terms of the retainer. Spiire Australia Pty Ltd does not and shall not assume any responsibility or liability whatsoever to any third party arising out of any use or reliance by third party on the content of this document.



L6 414 LA TROBE STREET PO BOX 16084 MELBOURNE  
VICTORIA 3007 AUSTRALIA T 61 3 9993 7888  
spiire.com.au ABN 55 050 029 635



Designed  
H.KURMUS  
Authorised  
P.CURNOW (PE0004069)  
Checked  
J.POYNOR  
Date  
08/07/22

**MARRAN RUN  
STAGE 1  
ROAD AND DRAINAGE  
FACE PLAN - SHEET 2  
CITY OF WHITTLESEA  
YOURLAND DEVELOPMENTS**

**CONSTRUCTION** Drg No **309855CR201** Rev **1**